

# Technical data sheet

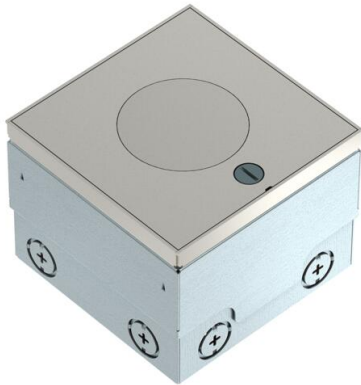
UDHOME2 floor socket, with tube body, unequipped, stainless steel

Item number: 7427097



Square installation unit for use in dry and wet-cleaned cavity and screed floors. Installation housing with pre-marked insertion openings for pipes (M25). Cover adjustable to top edge of floor covering using four height-adjustment supports. The minimum installation depth is 110 mm, the height-adjustment range +25 mm.

Up to two Modul45® sockets can be installed. Up to two modular data sockets (Keystones) can be installed with optional mounting supports. The load-bearing capacity of 15 kN is only guaranteed when in an unused state.



A2 Stainless steel

## Master data

|                     |                            |
|---------------------|----------------------------|
| Item number         | 7427097                    |
| Type                | UDHOME2 VT2                |
| Description 1       | Floor socket               |
| Description 2       | with tube body, unequipped |
| Manufacturer        | OBO                        |
| Dimension           | 140x140x110                |
| Material            | Stainless steel            |
| Smallest sales unit | 1                          |
| Unit of quantity    | Piece                      |
| Weight              | 297 kg                     |
| Weight unit         | kg/100 pc.                 |

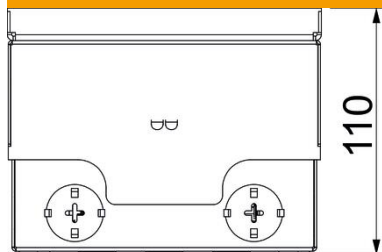
# Technical data sheet

UDHOME2 floor socket, with tube body, unequipped, stainless steel

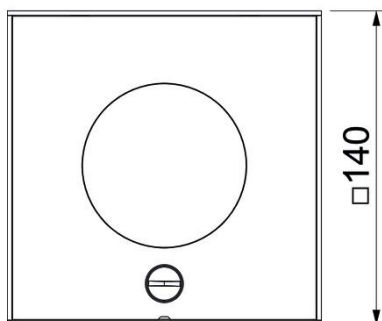
Item number: 7427097



## Dimensions



|        |        |
|--------|--------|
| Length | 140 mm |
| Width  | 140 mm |



## Technical data

|   |                     |
|---|---------------------|
| Number of mounting boxes                | 0                   |
| Version for                             | Square              |
| Cable outlet version                    | Lowerable tube body |
| Equipment                               | Empty housing       |
| Floor covering protection frame         | no                  |
| Floor care                              | Wet                 |
| Cover version                           | Decorative plate    |
| Seal installation option                | yes                 |
| Floor height, max.                      | 135 mm              |
| Floor height, min.                      | 110 mm              |
| Suitable for raised floor installation  | yes                 |
| Suitable for cavity floor installation  | yes                 |
| Suitable for wet care                   | yes                 |
| Suitable for underfloor ducts           | yes                 |
| Device support to accept mounting boxes | no                  |
| Length of external dimensions           | 140 mm              |
| Length of installation dimensions       | 140 mm              |
| With floor covering recess              | no                  |
| Protection rating (IP) when used        | IP20                |
| Protection rating (IP) when unused      | IP45                |
| Protection rating IK code               | IK10                |
| Vertical load, large area               | to 15,000 N         |

# Technical data sheet

UDHOME2 floor socket, with tube body, unequipped, stainless steel

Item number: 7427097



## Technical data

|                           |            |
|---------------------------|------------|
| Vertical load, small area | to 3,000 N |
| Opening mechanism         | Sash lock  |