

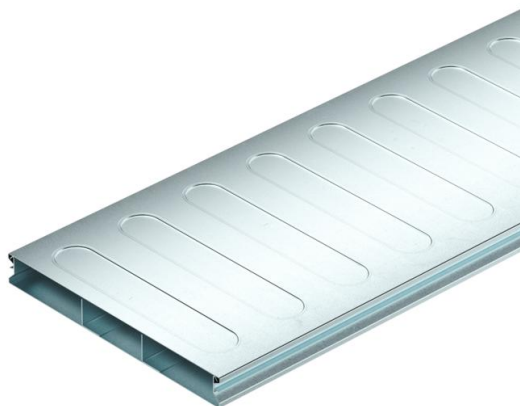
# Technical data sheet

Underfloor duct, 2 pieces, 3-compartment, duct height 28 mm

Item number: 7400275



Underfloor duct (2 piece) for routing cables in screed-covered underfloor systems, according to EN 50085-2-2. Removable and continuously lockable duct cover. With separating retainer in the duct base. The profiled side walls offer a locking mechanism to lock the duct cover onto the duct base. The stiffening beads in the duct cover serve to create stability.



**St** Steel

**FS** Strip galvanized

## Master data

Item number	7400275
Type	S3 25028-2
Description 1	Underfloor duct, 2-part
Description 2	3 compartments
Manufacturer	OBO
Dimension	2000x250x28
Material	Steel
Surface	Strip galvanized
Surface standard	DIN EN 10346
Smallest sales unit	2
Unit of quantity	Metre
Weight	395.812 kg
Weight unit	kg/100 m

## Dimensions

Length	2,000 mm
Width	250 mm
Height	28 mm
Dimension a	90 mm
Dimension b	70 mm
Dimension h	28 mm

# Technical data sheet

Underfloor duct, 2 pieces, 3-compartment, duct height  
28 mm

Item number: 7400275



## Technical data

Number of fixed partitions	2
Number of compartments	3 St.
Floor plate	yes
Application area	Screed-covered
Decouplable	no
Trunking width, min.	250 mm
Duct height, min.	28 mm
Usable cross-section	6130 mm <sup>2</sup>
Removable cover	yes
Cross-section, draw a	2166 mm <sup>2</sup>
Cross-section, draw b	1798 mm <sup>2</sup>