

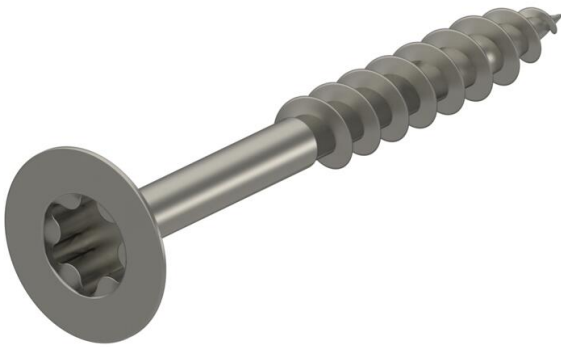
# Technical data sheet

Chipboard screw, with Torx, countersunk head, stainless steel

Item number: 3191074



Stainless steel wood screw with countersunk head and Torx drive for fastenings in interior and exterior areas.  
Areas of use: Wood, chipboard, plasterboard panels and plastic anchors.



**A4** Stainless steel

**2B** Bright, treated

## Master data

Item number	3191074
Type	OTSC 5,0x40 A4
Description 1	Chipboard screw
Description 2	countersunk head, TX 25 drive
Manufacturer	OBO
Dimension	5x40mm
Material	Stainless steel
Surface	Bright, treated
Surface standard	
Smallest sales unit	100
Unit of quantity	Piece
Weight	0.455 kg
Weight unit	kg/100 pc.

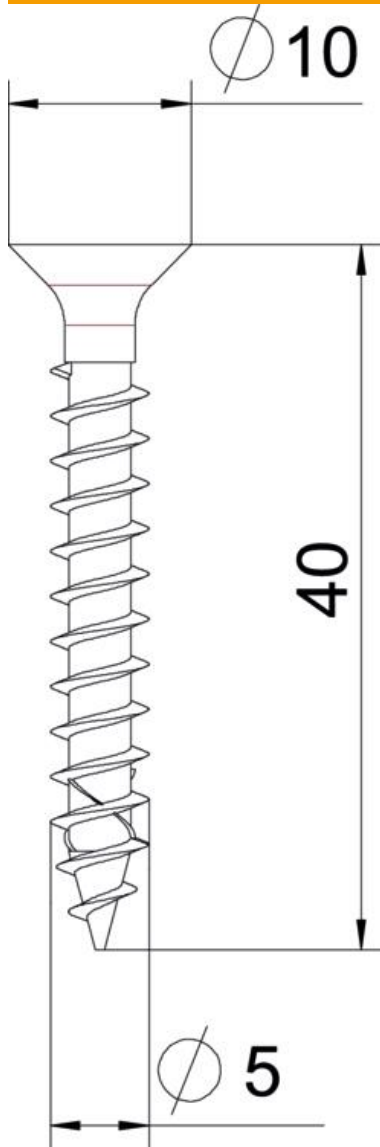
# Technical data sheet

Chipboard screw, with Torx, countersunk head, stainless steel

Item number: 3191074



## Dimensions



Length	40 mm
Dimension D	5 mm
Dimension L	40 mm

## Technical data

Drive size	TX 25
Hardened	no
Head diameter	10 mm
Head shape	Countersunk head
Screw system	Torx
Two-compartment	no