

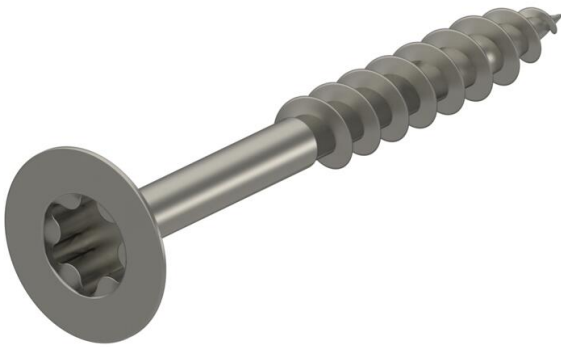
Technical data sheet

Chipboard screw, with Torx, countersunk head, stainless steel

Item number: 3191052



Stainless steel wood screw with countersunk head and Torx drive for fastenings in interior and exterior areas.
Areas of use: Wood, chipboard, plasterboard panels and plastic anchors.



A4 Stainless steel

2B Bright, treated

Master data

| | |
|---------------------|-------------------------------|
| Item number | 3191052 |
| Type | OTSC 3,5x40 A4 |
| Description 1 | Chipboard screw |
| Description 2 | countersunk head, TX 10 drive |
| Manufacturer | OBO |
| Dimension | 3,5x40mm |
| Material | Stainless steel |
| Surface | Bright, treated |
| Surface standard | |
| Smallest sales unit | 100 |
| Unit of quantity | Piece |
| Weight | 0.21 kg |
| Weight unit | kg/100 pc. |

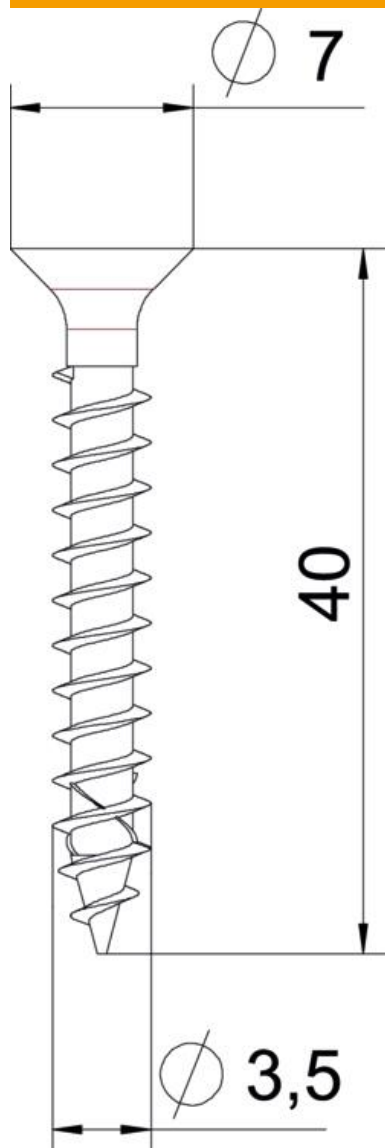
Technical data sheet

Chipboard screw, with Torx, countersunk head, stainless steel

Item number: 3191052



Dimensions



| | |
|-------------|--------|
| Length | 40 mm |
| Dimension D | 3.5 mm |
| Dimension L | 40 mm |

Technical data

| | |
|-----------------|------------------|
| Drive size | TX 10 |
| Hardened | no |
| Head diameter | 7 mm |
| Head shape | Countersunk head |
| Screw system | Torx |
| Two-compartment | no |