

Technical data sheet

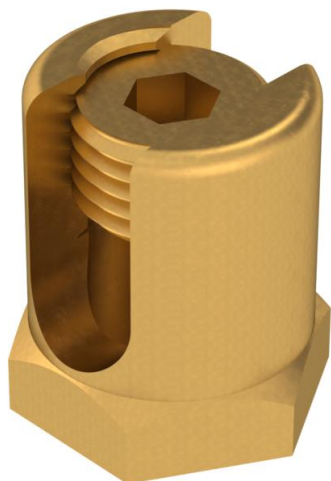
Earthing terminal with fastening thread

Item number: 6404016



Earthing terminal for fastening the equipotential bonding conductor to the cable support system. M14 threaded pin, Allen drive with 6 mm across flats.

Suitable for conductor cross sections of 25–75 mm².



 Brass

Master data

| | |
|---------------------|--------------------------|
| Item number | 6404016 |
| Type | EKL 35 M6 ISK |
| Description 1 | Earthing terminal |
| Description 2 | with fastening thread M6 |
| Manufacturer | OBO |
| Dimension | 25-75mm ² |
| Material | Brass |
| Smallest sales unit | 50 |
| Unit of quantity | Piece |
| Weight | 4.8 kg |
| Weight unit | kg/100 pc. |

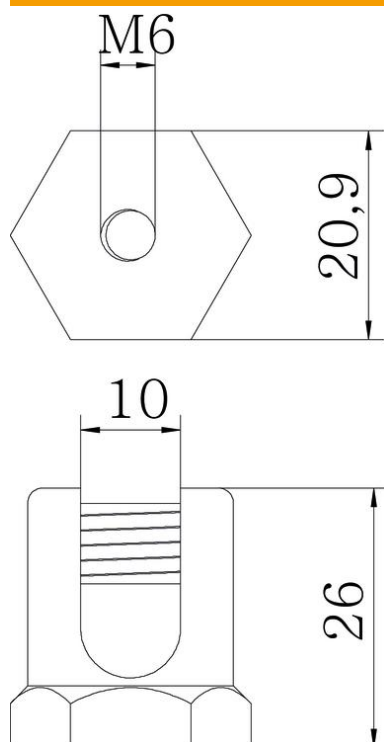
Technical data sheet

Earthing terminal with fastening thread

Item number: 6404016



Dimensions



| | |
|-------------|-------|
| Dimension L | 26 mm |
| Dimension I | 10 mm |

Technical data

| | |
|-------------------------------|---------------------|
| Maintain electrical functions | no |
| Suitable for mesh cable tray | no |
| Suitable for cable ladder | yes |
| Suitable for cable tray | yes |
| Thread | M6 |
| With screw accessories | no |
| Cross-section | 75 mm ² |
| Rustproof steel, pickled | no |
| WAF | 21 |
| Connection type | With pin/drill hole |